



HAPPY-TRAIL.COM

Dual Sport & Adventure Touring Specialists

Thank you for purchasing Happy Trails products. Our products are proudly hand made in Boise Idaho, USA. If you have any questions or concerns about the installation of this product, please contact us directly at 1-208-377-8771 or e-mail support@happy-trail.com.

Before you begin, place the bike on a hard level surface where you have room to work. Lay out the parts included in this kit and compare to the parts list on the final pages of these instructions. If any parts or hardware are missing, contact us immediately at the number or email listed above.

Step 1

Remove the lid to the rear storage space behind seat by using your bike key and pulling forward on the lid. This will gain access to the turn signal nuts.

Remove turn signals bolts. Note these will not be reused.

Fig1



Step 2

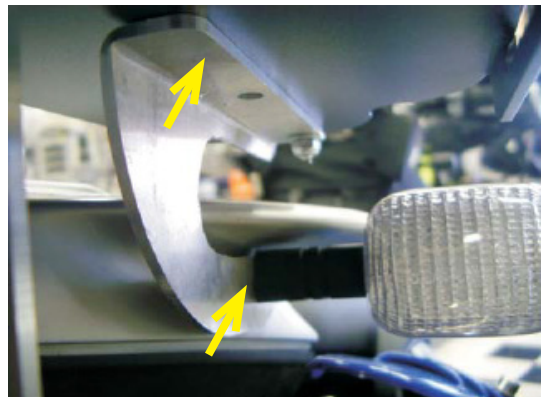
Install side brackets to the turn signal location as follows:

Top flange will face outside of bike as shown in Fig2.

Install turn signal through bracket, through spacers, and into the turn signal mount location.

Secure using M6x35 SH bolts, M6 Nylock nut, and (2) M6 flat washers. Do not fully tighten yet.

Fig 2



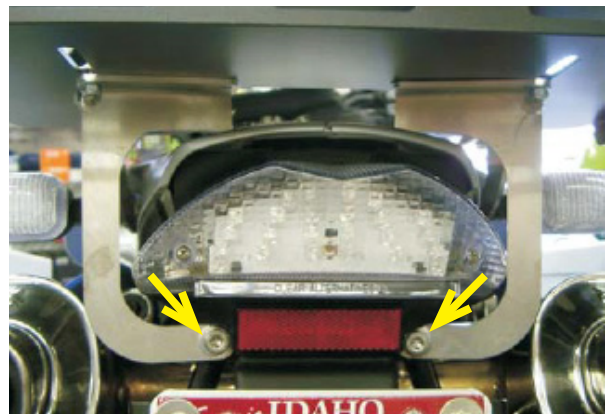
Step 3

Remove any bolts from factory luggage mounts under the rear brake light assembly.

Install rear brackets as shown in Fig3 with the top flange facing the rear of the bike. A 1/2" spacer may be needed between bracket and frame mount depending on what exhaust is on your bike.

Secure to the luggage mounts using the 1/2"L spacer, M8x40 SH bolts, M8 Flat Washers, and M8 Lock Washer. Do not fully tighten yet.

Fig 3



Step 4

Snug up all bracket locations so they will still move with a little force. Place top plate on brackets at desired position and move brackets as necessary so they are flat against bottom of top plate.

Mark 8 hole locations as needed and drill holes in top plate.

Secure using the (8) M6x20 BH bolts, (16) M6 washers, and (8) M6 Nylock nuts.

Fig 4



Step 5

Fully tighten all bolts to the following torque specs:

M8 bolts should be tightened to 18 ft/lbs

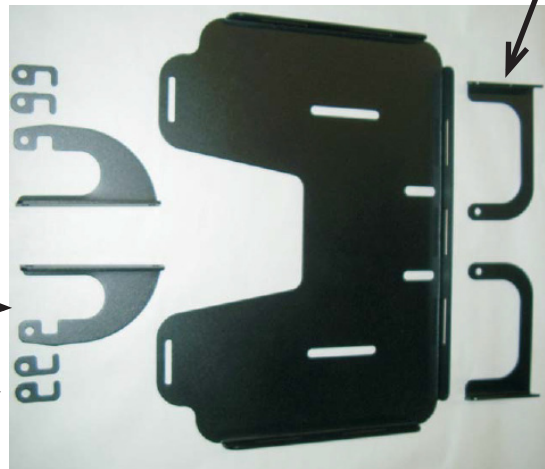
M6 bolts should be tightened to 9 ft/lbs

Recommended Tools:

6mm Allen (hex) Wrench
5mm Allen (hex) Wrench
4mm Allen (hex) Wrench
10mm box end wrench or socket

Side Bracket →

Spacers →



Rear Bracket →

Hardware List:

- (1) Custom Top Plate
- (2) L & R Rear Bracket
- (2) L & R Front Bracket
- (4) Custom Spacers

- (2) M8x40 SH
- (2) M8 Flat Washers
- (2) M8 Split HC Lock Washers
- (2) M6x35 SH
- (8) M6x20 BH
- (20) M6 Flat Washers
- (10) M6 Nylock Nuts
- (2) Spacer 1/2" L x 3/4" OD x .319 ID

